



## The Docket



### Inside this Issue

- HOA Board Members 1
- 2016 Annual members Meeting 1
- Welcome New Board members 1
- Important Emails 1
- Recycle Can Link 1
- Community Snow Removal 1
- Holiday Light Show 1 & 4
- Architectural News 2
- Annual Assessment 3
- Snow Storm Jonas 2016 5, 6 & 7
- Warm Winter Lemon Cake 8



### Thank You Board Members and Welcome New Board Member, Kelsey Gregg!!!

#### Board Members named:

- President- John Bassolino
- Vice President- Hans Phillips
- Treasurer- Bev Serrano
- Secretary- Brenda Schweiger
- Member at Large (1) Mike Oehler
- Member at Large (2) Angela Shiplet
- Member at Large (3) Kelsey Gregg

#### Important Emails

- Webmaster- [webmasters@thegablesinfo.com](mailto:webmasters@thegablesinfo.com)
- HOA Board - [gablesboard@thegablesinfo.com](mailto:gablesboard@thegablesinfo.com)
- ArchComm- [archcomm@thegablesinfo.com](mailto:archcomm@thegablesinfo.com)

The Gables annual HOA members meeting was held as announced at The Stained Glass Pub in Elkridge with a successful turnout of 21 members. Please view the minutes from the meeting posted on our website under the Gables HOA tab to read about our meeting.

The 2015 financial report and 2016 budget can also be found on our website under the Gables HOA Financial tab.

Thanks to all who attended the social and meeting!!!



Feed the Green Recycle cans available from HC  
Just go to link and fill out form  
<https://data.howardcountymd.gov/foodscrapprogram/>

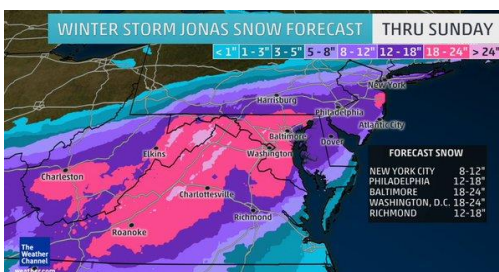


#### •Graftons View Holiday Light show

Hope everyone had a chance to stop by and see the beautiful light show set up by our neighbor, Jay Cook on Graftons view. We like to thank Jay for hosting a community get together to learn about how he did it.

#### •See page 4 to see how Jay set this up

### Snow Storm Jonas 2016 See pages 5,6 & 7



## Architectural News

thank  
you!

**Many thanks to our Arch committee Chair, Barb Otten and team  
Kristy Mumma, Kathy McCrory, Bonny Smajda and Brenda Schweiger for their help in  
keeping our community looking beautiful!!!**



### Annual Inspections

We will be sending out the inspection notices to the community by the end of February 2016. All members that were in violation will receive an email from the Architectural Committee citing what was noticed. If you are notified, the Architectural committee will expect your attention to the items we found. If you have any questions you can email the Architectural committee at: [ArchComm@TheGablesInfo.com](mailto:ArchComm@TheGablesInfo.com)

### Arch Alteration Application Form

If you are going to do **any** improvements to the exterior of your home, you are required to complete the Arch Alteration form that is located on our website at [thegablesinfo.com](http://thegablesinfo.com) under the tab "forms" and return it to the Architectural Committee for review. A full description is needed and, requires two (2) adjoining neighbors' signatures.

This requirement maintains our community standards and values. Thank you to all the homeowners who have followed the procedure in the past. Should you have any questions, please send an email to the Arch committee at [ArchComm@thegablesinfo.com](mailto:ArchComm@thegablesinfo.com)

### Spring Power Washing



As discussed the architectural committee's next community project is power washing. During the inspection process we noticed some homes in need of a thorough scrub of their siding, sidewalks and steps. We are asking anyone who is interested in a community group rate discount to email the Architectural committee at [ArchComm@TheGablesInfo.com](mailto:ArchComm@TheGablesInfo.com).

Dear GABLES Homeowner,

This is your notice of the 2016 Annual Assessment for The GABLES.

(Please refer to Section 3 of the G.A.L.H. Articles of Incorporation, and Section 6 of the Declaration of Covenants.)

**The GABLES' Annual Assessment for 2016 is \$350.**

**Your Annual Assessment payment is due February 29, 2016.** However, consistent with 2015 assessment

- an early-payment discount of \$25 (net \$325) applies to dues that are paid before the end of January;
- the full amount of \$350 is due for payments made after Jan. 31<sup>st</sup> but before Feb. 29<sup>th</sup>; and
- as provided for under the Declaration of Covenants, a \$20 penalty is assessed along with additional fees (calculated as monthly increments of a 20%-per-year interest charge) on all payments made after February 29<sup>th</sup>.

The detailed payment timetable for 2016 dues is as follows:

<b>IF YOU PAY YOUR DUES BY THIS DATE</b>	<b>YOUR PAYMENT AMOUNT IS</b>
<b>January 31, 2016</b>	<b>\$ 325</b>
<b>February 29, 2016</b>	<b>\$ 350</b>
<b>March 31, 2016</b>	<b>\$ 375</b>
<b>April 30, 2016</b>	<b>\$ 380</b>
<b>May 31, 2016</b>	<b>\$ 385</b>
<b>June 30, 2016</b>	<b>\$ 390</b>
<b>July 31, 2016</b>	<b>\$ 395</b>

Please note that interest will continue to accrue until payment is made. These dues are not covered by your mortgage escrow, and are directly payable by you.

When paying your Annual Assessment, please

✓ **Make your check payable to:**

***The Gables At Lawyers' Hill Association, Inc.***

✓ **Mail your payment to:**

***G.A.L.H. Association, Inc.***

***Attn: Treasurer***

***P.O. Box 8023***

***Elkridge, MD 21075-8023***

Thank you for your prompt payment. A remittance form is enclosed on Page 2 for your convenience.

All future payment reminders will be sent to you via e-mail. If you have a new email, please let us know.

Any questions or concerns may be directed to The GABLES Board by e-mail at ***gablesboard@thegablesinfo.com***.

Regards, and Best Wishes for a Happy New Year!

*Beverly Serrano*, Treasurer, G.A.L.H. Association, Inc.

Computerized Holiday Lights by Jay Cook



Creating a computerized light show takes many, many hours to develop.

The choreography of the lights is developed on a PC using software called a “sequencer”. The sequence data is sent to controllers which supply power and data to the lights. The lights used in this type of show are called Pixels. Pixels can be programmed to be any color and intensity. Each light is individually controllable which allows for many different effects to be created. Each light has a unique number therefore we can turn on one light at a time.

Most asked questions:

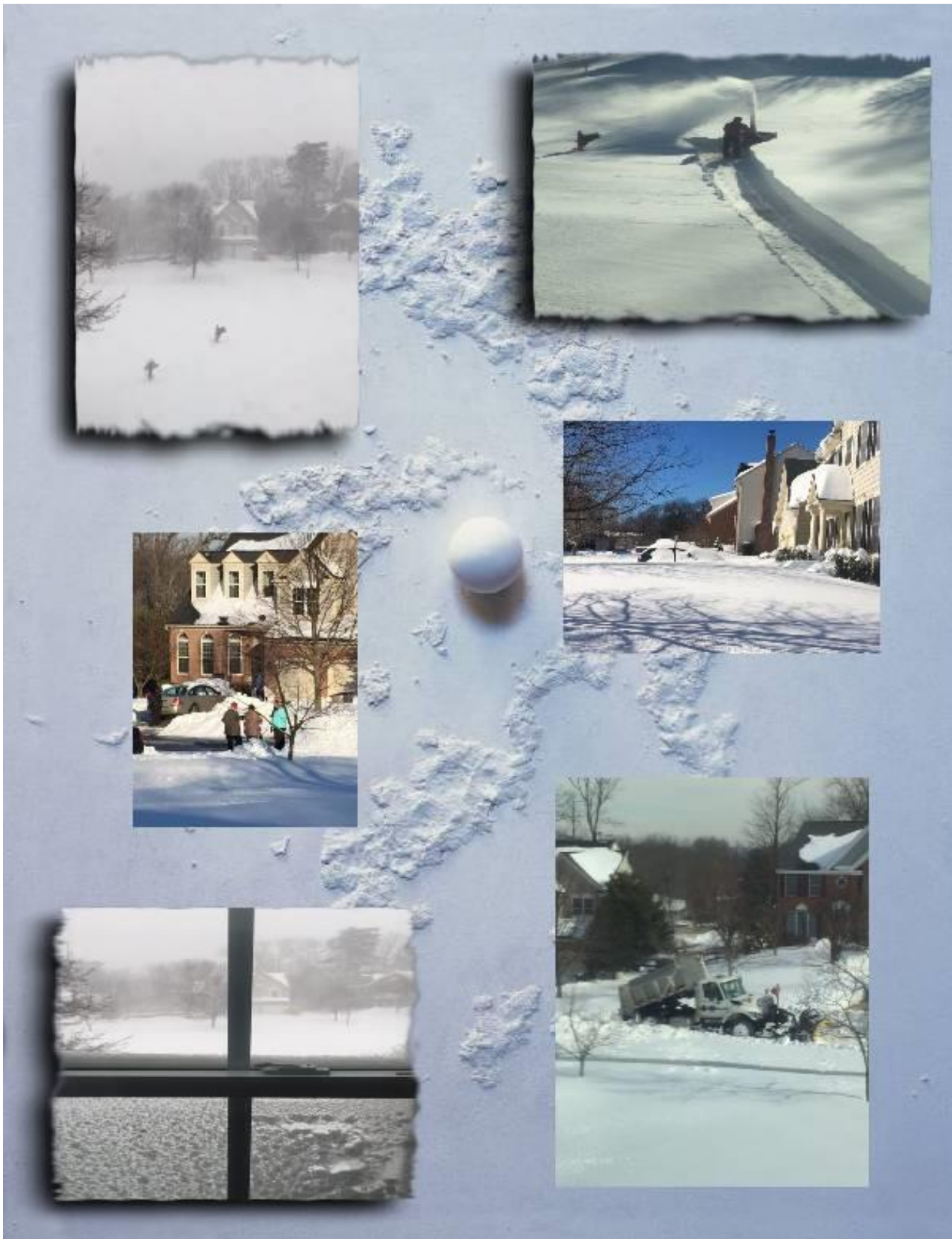
1. Where did we buy it? We purchased the components used in our show from various suppliers. All of the lights come from China.
2. How many lights do you have? 6,200.
3. How did you get the lights to be in sync with a radio station? It actually not a radio station but a FM transmitter in our garage that broadcasts the music a short distance.
4. I bet your electricity bill is outrageous? Actually the lights take less power than your normal lights for several reasons. The lights are energy efficient LEDs. In addition, not all of the lights are on at the same time and when they are any color other than white, they take less power to operate. The show takes less power than a standard hairdryer to power.
5. How long does it take to program a song? It takes about 8-10 hrs. per minute to program.
6. How long have you been doing this? This is our first year.

How much did it cost? Well, we won't talk about that.





The Board would like to thank everyone who helped each other during and after the storm. Way to go Neighbors!!!



## Warm Winter Lemon Cake



### What you Need:

- 1 pkg. (2-layer size) yellow cake mix
- 2 pkg. (3.4 oz. each) JELL-O Lemon Flavor Instant Pudding
- 1/3 cup granulated sugar
- 2 cups cold milk
- 1-1/4 cups water
- 2 Tbsp. powdered sugar

### Make It:

Heat oven to 350°F.

Prepare cake batter as directed on package; pour into 13x9-inch baking dish sprayed with cooking spray.

Beat dry pudding mixes, granulated sugar, milk and water with whisk 2 min.; pour over batter in dish. Place baking dish on baking sheet. (Baking sheet will catch any sauce that might bubble over sides of dish as dessert bakes.)

Bake 55 min. to 1 hour or until toothpick inserted in center comes out clean. Cool 20 min. (Sauce will thicken slightly as it cools.) Sprinkle with powdered sugar. Serve warm. Refrigerate leftovers.